

JPH

Lexmark + Hospitality

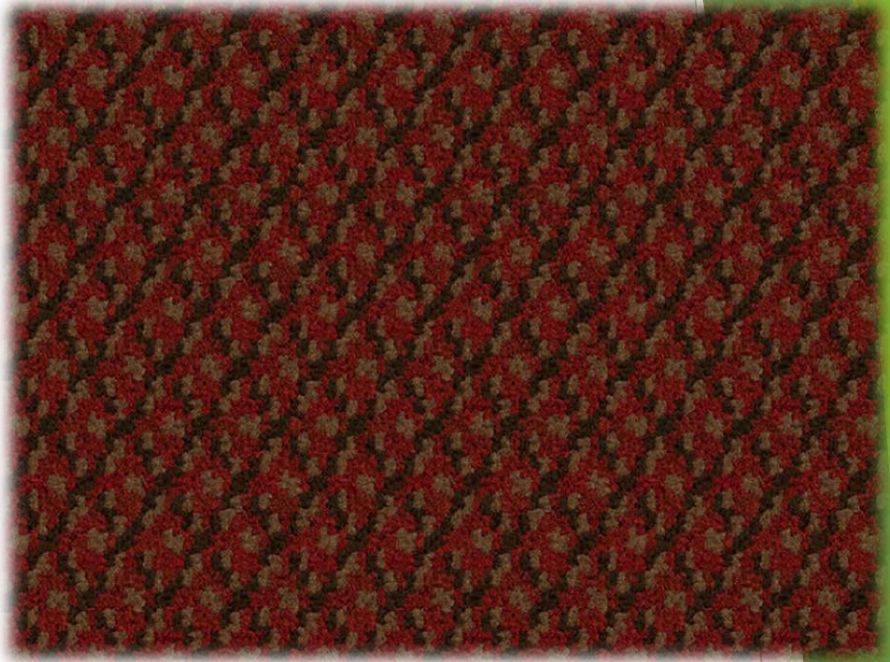
CUT PILE GRAPHICS

(100% RASURADO)

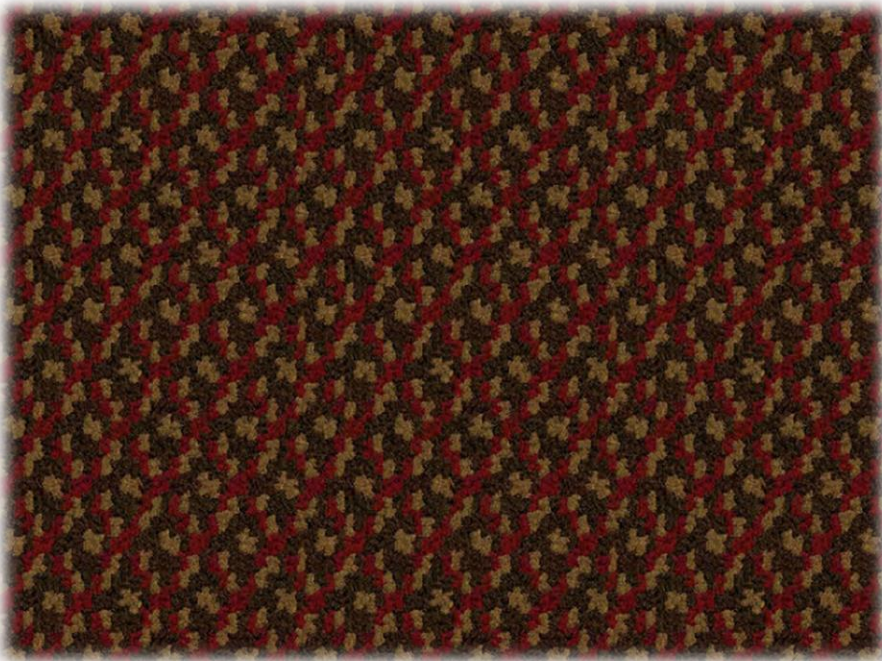


Lexmark+ Hospitality

Pattern N°: 3000
Size: 8" x 1.2"
100% Solution Dyed Nylon



2041 | 7509 | 7510

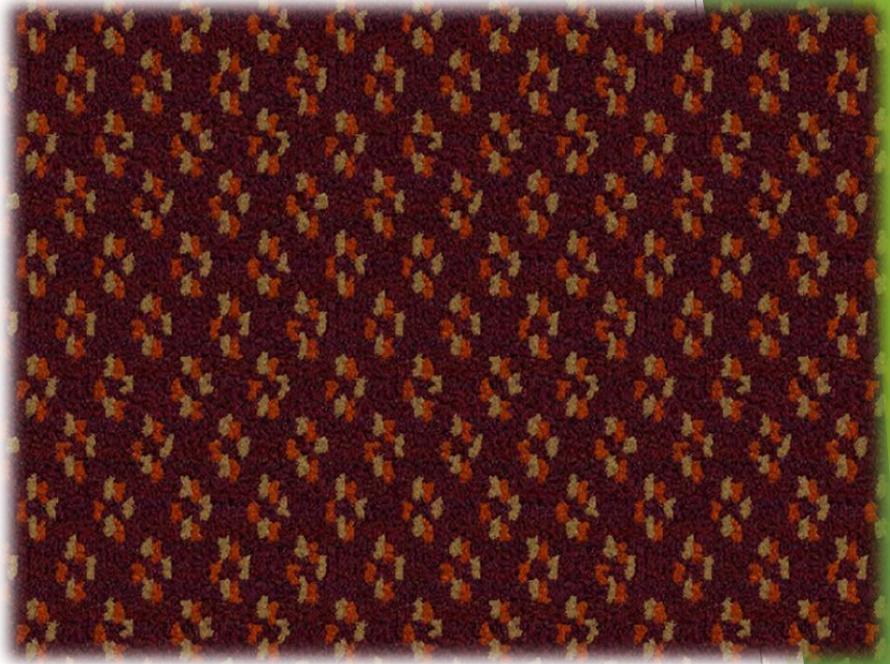


7510 | 7021 | 2041

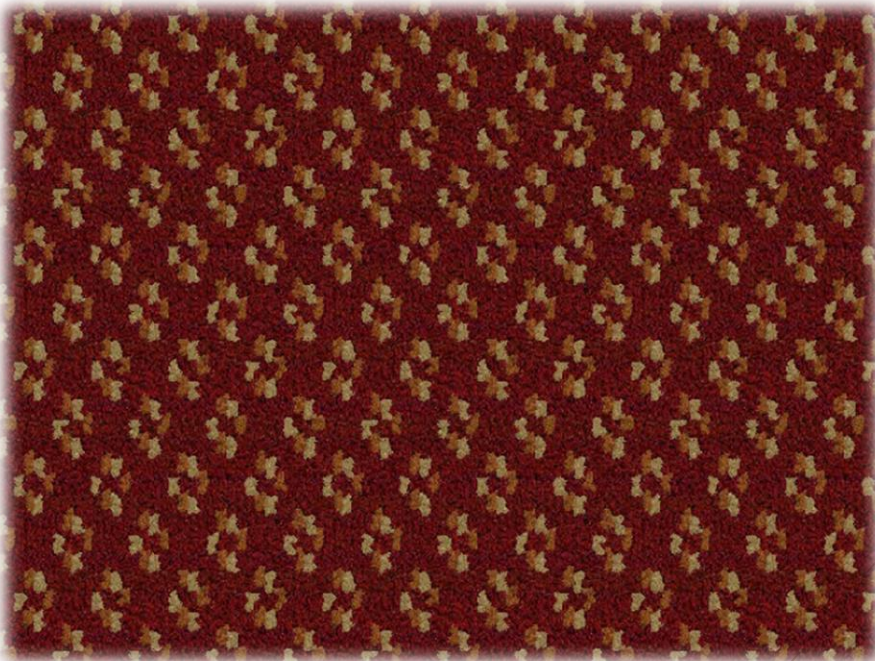


Lexmark+ Hospitality

Pattern N°: 3009
Size: 8" x 1.2"
100% Solution Dyed Nylon



2006 | 3001 | 3508



2041 | 3009 | 3004



Lexmark+ Hospitality

Pattern N°: 3021
Size: 1.8" x 1.7"
100% Solution Dyed Nylon



2041 | 2006



2041 | 3004



Lexmark+ Hospitality

Pattern N°: 3038
Size: 7.8" x 5.5"
100% Solution Dyed Nylon



7510 | 2041 | 3514



7510 | 3514 | 2041

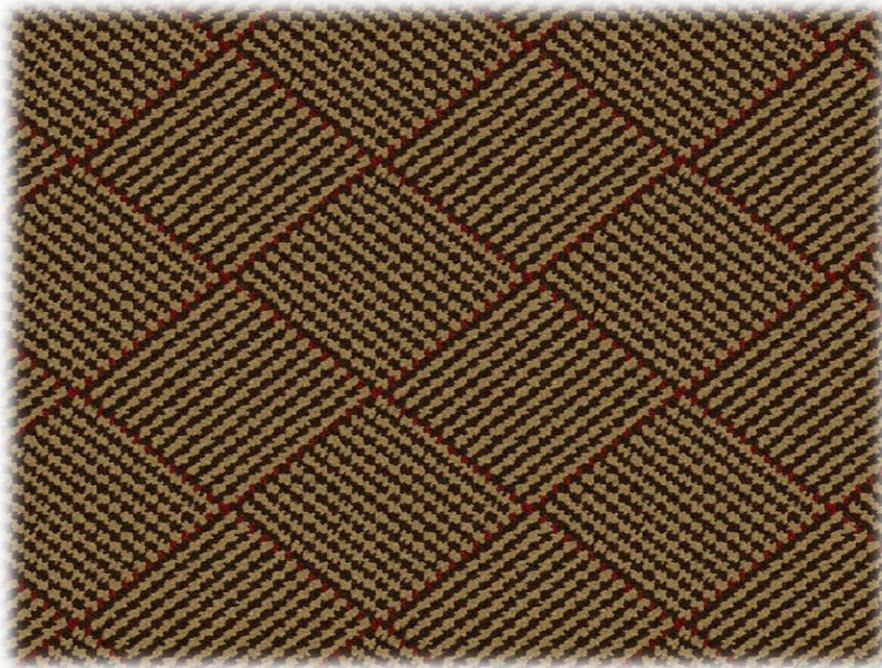


Lexmark+ Hospitality

Pattern N°: 3069
Size: 5.0" x 4.8"
100% Solution Dyed Nylon



2041 | 7510 | 3004



3004 | 7510 | 2504



Lexmark+ Hospitality

Pattern N°: 3083
Size: 4.2" x 4.0"
100% Solution Dyed Nylon



2041 | 3514 | 7510

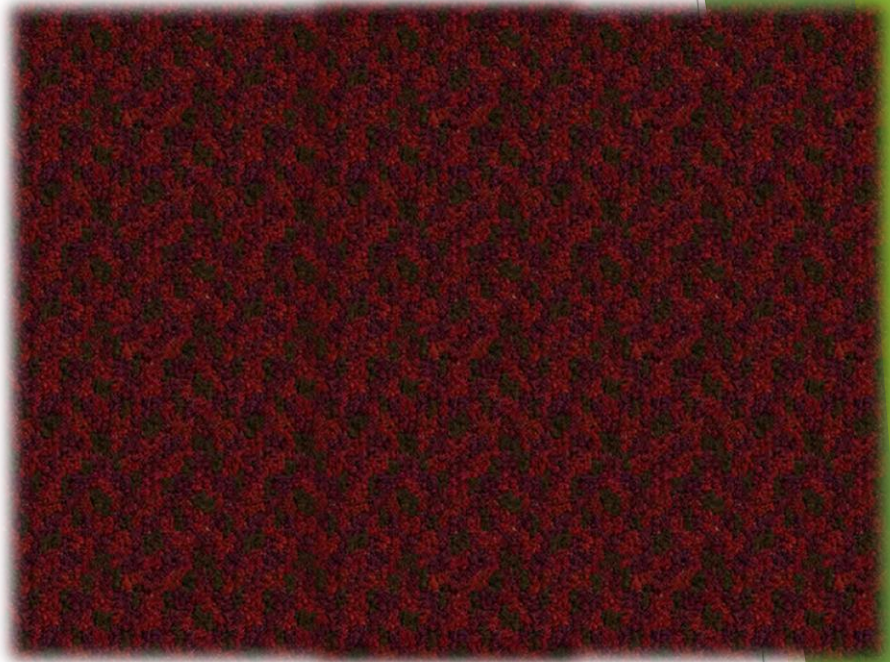


3514 | 2041 | 7510

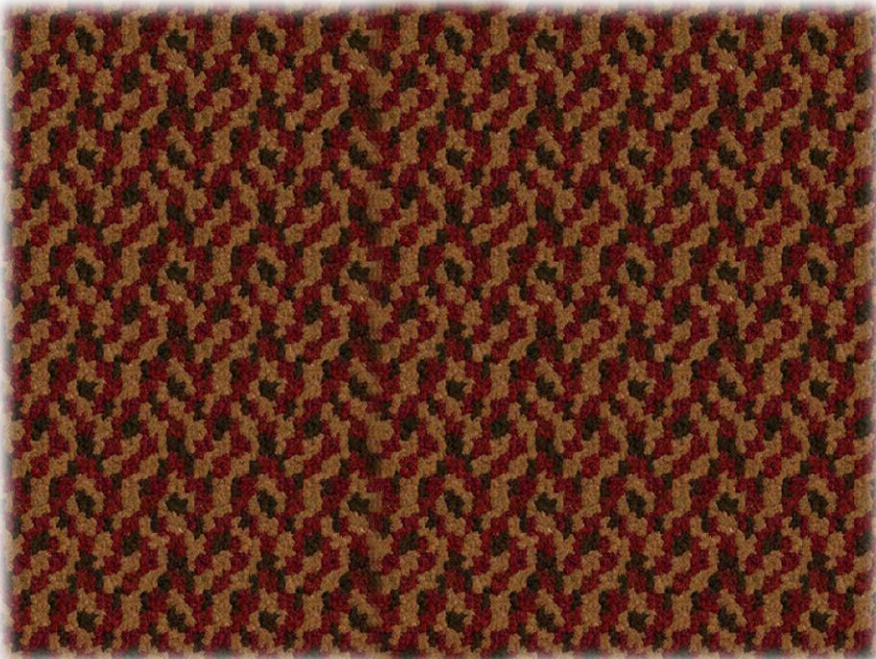


Lexmark+ Hospitality

Pattern N°: 3106
Size: 1.4" x 1.7"
100% Solution Dyed Nylon



2041 | 7510 | 2006

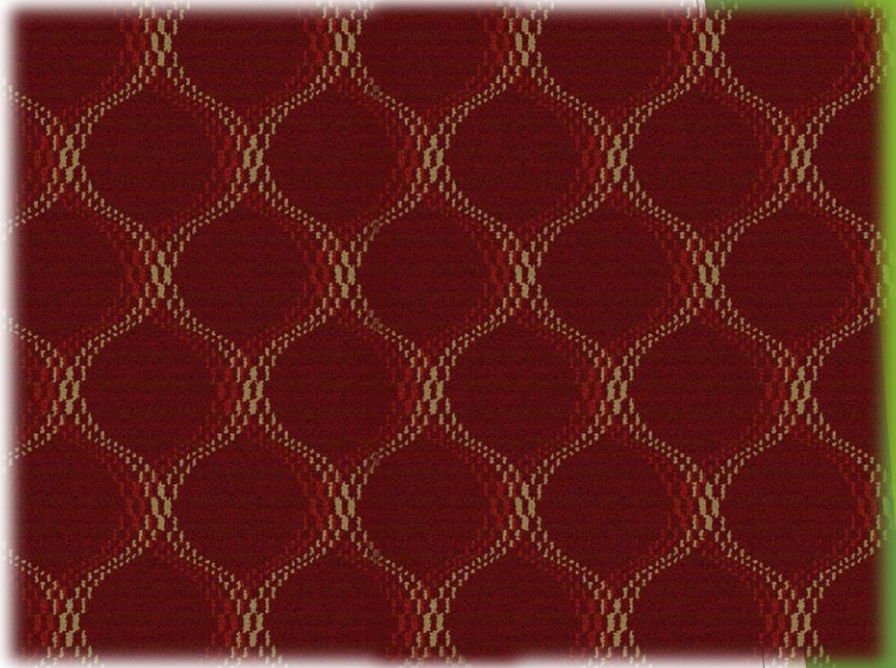


3514 | 7510 | 2041

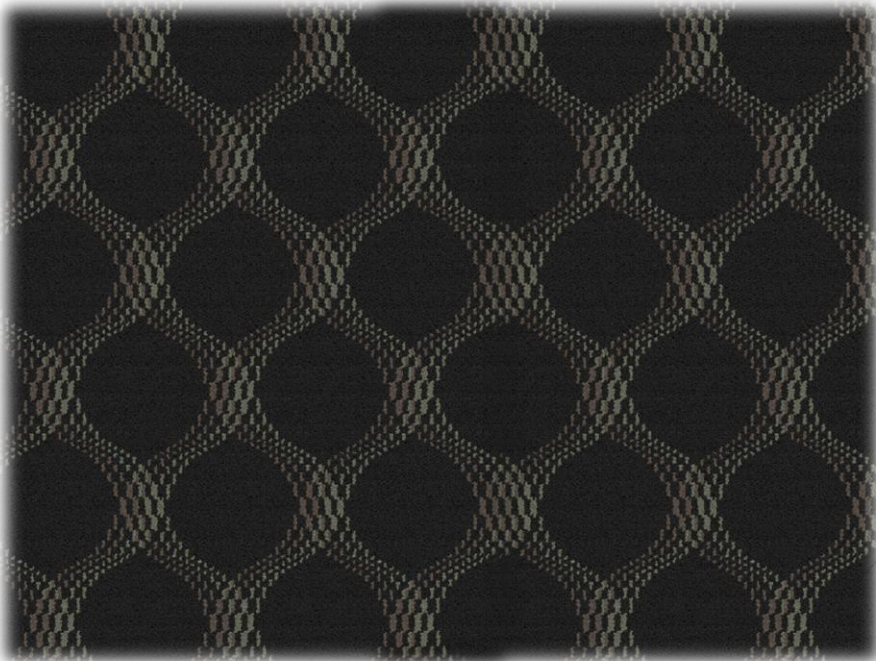


Lexmark+ Hospitality

Pattern N°: 4001
Size: 5.8" x 6.4"
100% Solution Dyed Nylon



2041 | 3004 | 2502



8004 | 8502 | 8503